



RICH MANTRA

Industries Pvt. Ltd.

About the Company

RichMantra, founded in May 2025. It is dedicated to transforming lives through authentic Ayurvedic supplements and a dynamic network marketing model. We blend ancient wellness wisdom with modern entrepreneurial opportunities to promote holistic health and financial freedom. Our premium products enhance vitality and balance, while our community empowers individuals to build thriving businesses. At RichMantra, we foster a movement for a healthier, wealthier world. Join us to embrace true richness in health and prosperity.





Our **Mission** and **Vision**

Mission

At Rich Mantra, our mission is to empower individuals to achieve holistic wellness and financial freedom through the transformative power of authentic Ayurvedic supplements.

Vision

Rich Mantra envisions a world where holistic health and financial independence are within everyone's reach.

Our Products



TRIPHALA DETOX JUICE

Benefits

- **Digestive Health:** Promotes regular bowel movements, enhances digestion, and supports gut microbiota balance.
- **Detoxification:** Facilitates toxin elimination and supports liver and kidney function.
- **Immune Support:** Provides antioxidants to reduce oxidative stress and bolster immunity.
- **Weight Management:** Improves metabolism and reduces bloating, aiding in weight control.
- **Skin and Hair Health:** Combats premature aging and supports scalp health.
- **Blood Sugar and Cholesterol:** May help regulate blood sugar and maintain healthy cholesterol levels.
- **Oral Health:** Antimicrobial properties reduce plaque and promote gum health.

MRP: 1900 | DP: 1200 | BV: 900



SEA BUCKTHORN WITH CURCUMIN OIL

Benefits

- **Enhanced Antioxidant Activity:** Combines sea buckthorn's vitamins and carotenoids with curcumin's polyphenols to neutralize free radicals, potentially reducing aging and disease risk.
- **Improved Skin Health:** Supports hydration, elasticity, and regeneration; reduces inflammation and acne; and promotes wound healing and scar reduction.
- **Cardiovascular Health Support:** May lower cholesterol, reduce inflammation, and improve endothelial function, potentially decreasing cardiovascular disease risk.
- **Anti-Inflammatory and Pain Relief:** Inhibits inflammatory pathways, potentially alleviating chronic inflammation and pain, such as in arthritis.
- **Digestive Health Benefits:** May reduce gastric ulcers, improve gut motility, and alleviate inflammatory bowel disorder symptoms.

MRP: 1900 | DP: 1200 | BV: 900



MIX BERRY JUICE

Benefits

- **Rich in Antioxidants:** Neutralizes free radicals with anthocyanins and vitamin C, potentially reducing chronic disease risk.
- **Cardiovascular Health:** Improves blood vessel function, reduces blood pressure, and lowers LDL oxidation.
- **Immune Function:** Boosts immunity with vitamin C and antimicrobial properties, particularly for urinary tract health.
- **Digestive Health:** Supports regular bowel movements and gut microbiome balance with fiber and polyphenols.
- **Cognitive Function:** Enhances memory and protects against cognitive decline, particularly from blueberries.
- **Skin Health:** Promotes collagen synthesis and reduces UV damage and inflammation.

MRP: 1900 | DP: 1200 | BV: 900



KIDNEY CARE

Benefits

- **Kidney Detoxification:** Promotes urine production and reduces oxidative stress to aid toxin elimination.
- **Urinary Tract Infection Prevention:** Inhibits bacterial adhesion in the urinary tract, reducing UTI risk.
- **Kidney Stone Prevention:** Increases urinary citrate and dilutes urine to prevent stone formation.
- **Cardiovascular and Kidney Health:** Regulates blood pressure and improves blood flow to support renal function.
- **Anti-Inflammatory Effects:** Reduces kidney and urinary tract inflammation with flavonoids and gingerol.
- **Hydration Support:** Enhances hydration to maintain optimal kidney function and filtration.

MRP: 1900 | DP: 1200 | BV: 900



Free Registrations

No Fees Will Be Charge While Registrations & Follow all Government Rules



Activation

Minimum 2000 BV

Types of Income

- **Retail Income**
- **Matching Income**
- **Direct Sponsor Matching Income**
- **Direct Referral Income**
- **Franchise Income**
- **Generation Income**
- **Travelling Bonus**

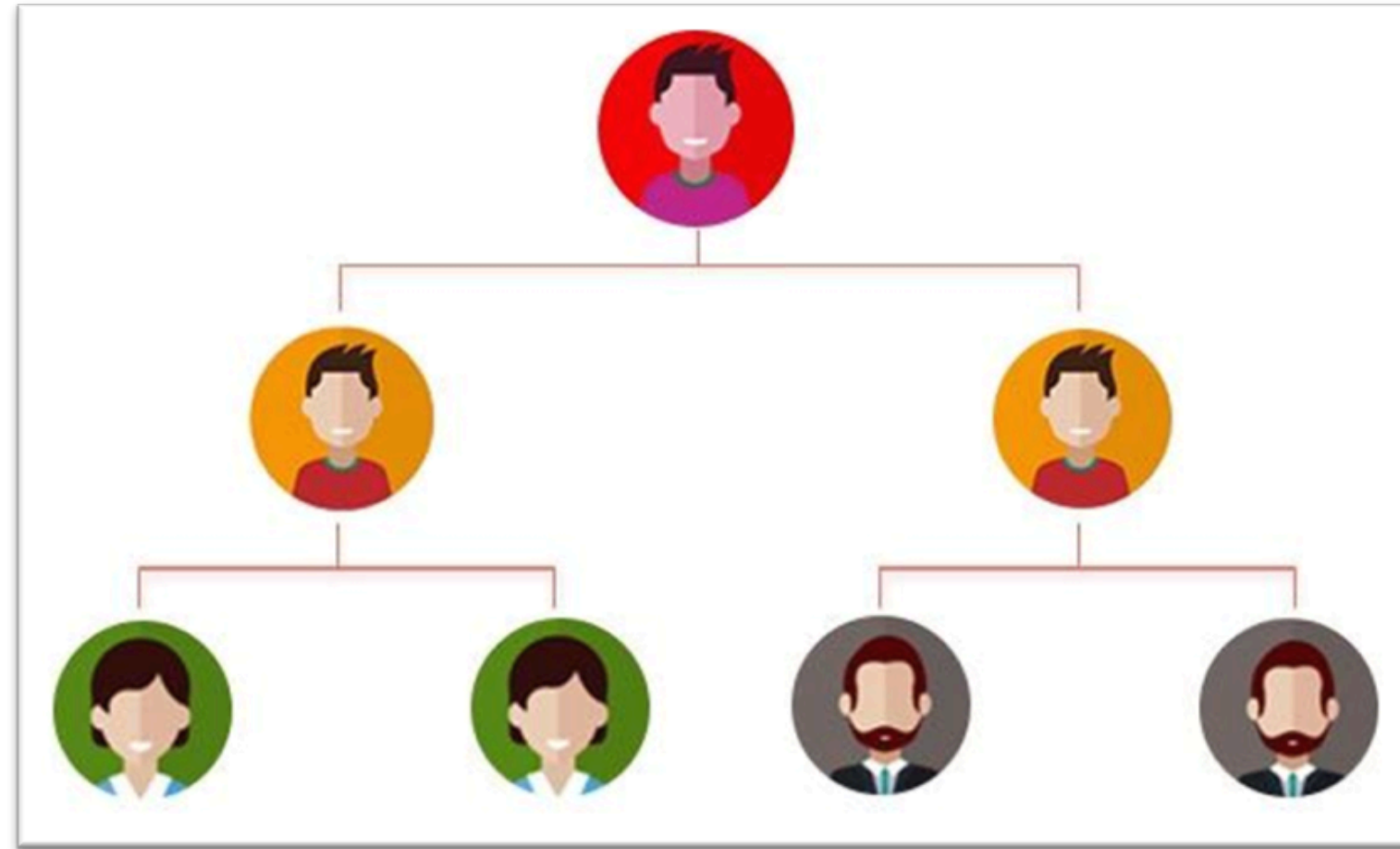




Retail Income

EarnUp to 30%
Profit on Every Sale

Matching Income



1:1 Ratio From Starting

15% Matching Income

Daily Capping ₹ 10000/-

Direct Sponsor Matching Income

100 % Income On Sponsors Matching

(Single Leg)

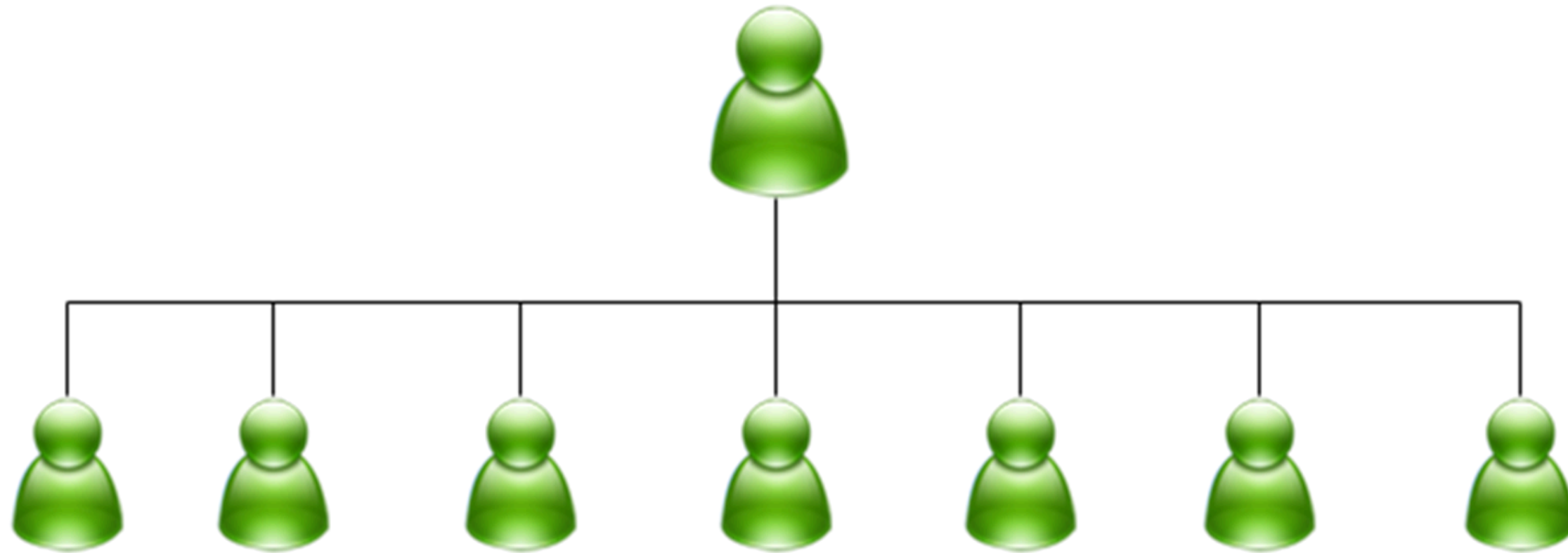
50% From First Level

+

50% From Second Level



Direct Referral Income



5 % Direct Referral Income

You earn 10% of the package amount made by each person you directly refer.

No Capping Applicable

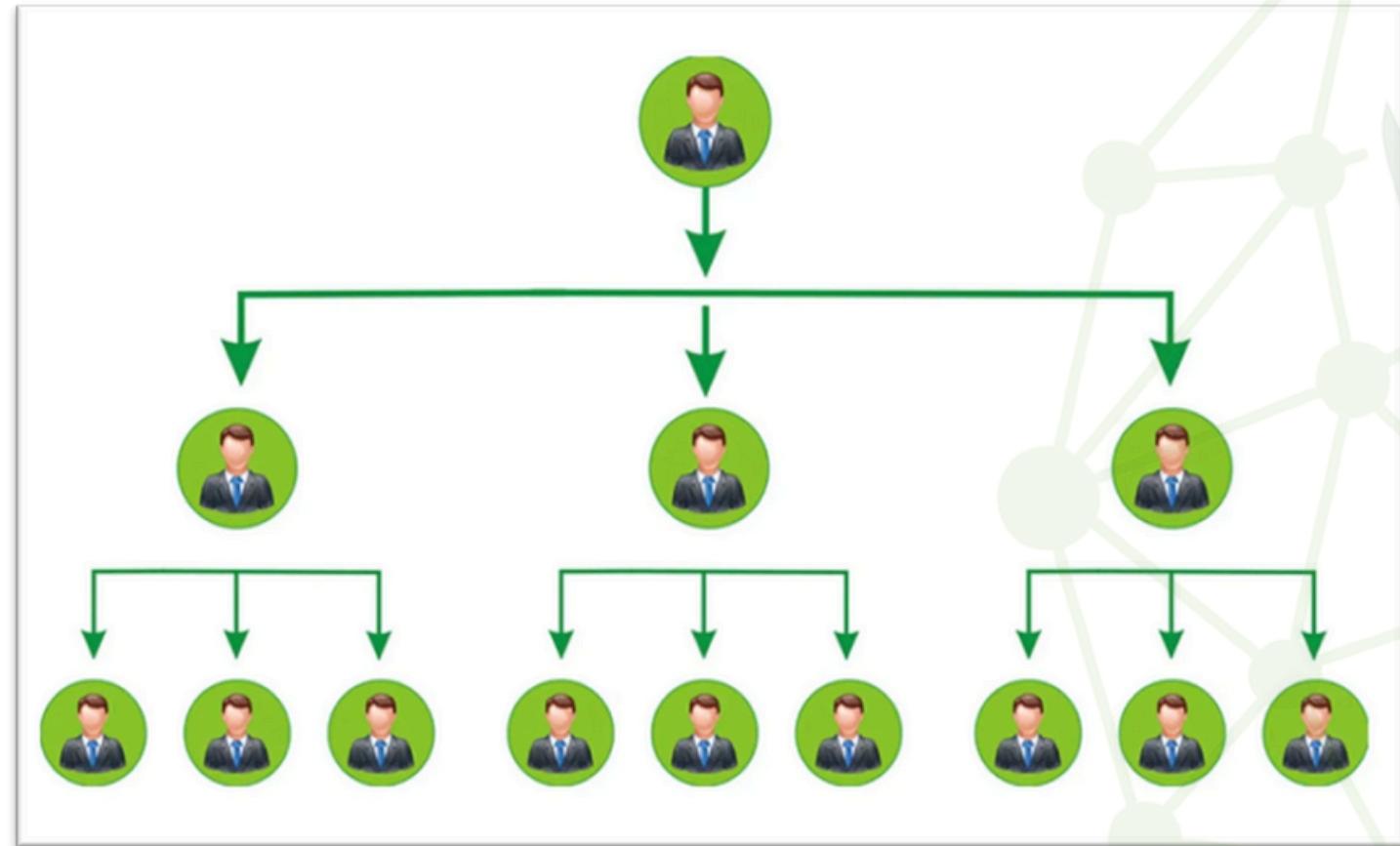
Franchise Income



10 % Franchise Income

**Earn Upto 20% Margin On DP Price of All Products
By Purchasing Company Franchise**

Generation Income



1st Level : 30%

2nd Level : 20%

3rd Level : 15%

4th Level : 10%

5th Level : 8%

6th Level : 6%

7th Level : 4%

8th Level : 3%

9th Level : 2%

10th Level : 2%

5 % Self Repurchase + 30 % From Generation

Travelling Bonus

Rank Name	Pair	Income	Rank Name	Pair	Income
Star	25	500	Diamond	2000	35000
Silver	50	1000	Double Diamond	4000	70000
Gold	100	2000	Blue Diamond	8000	140000
Platinum	200	4000	Crown Dramond	16000	280000
Ruby	400	8000	Roya Diamond	35000	556000
Emraald	800	16000	Kohinoor	100000	1120000

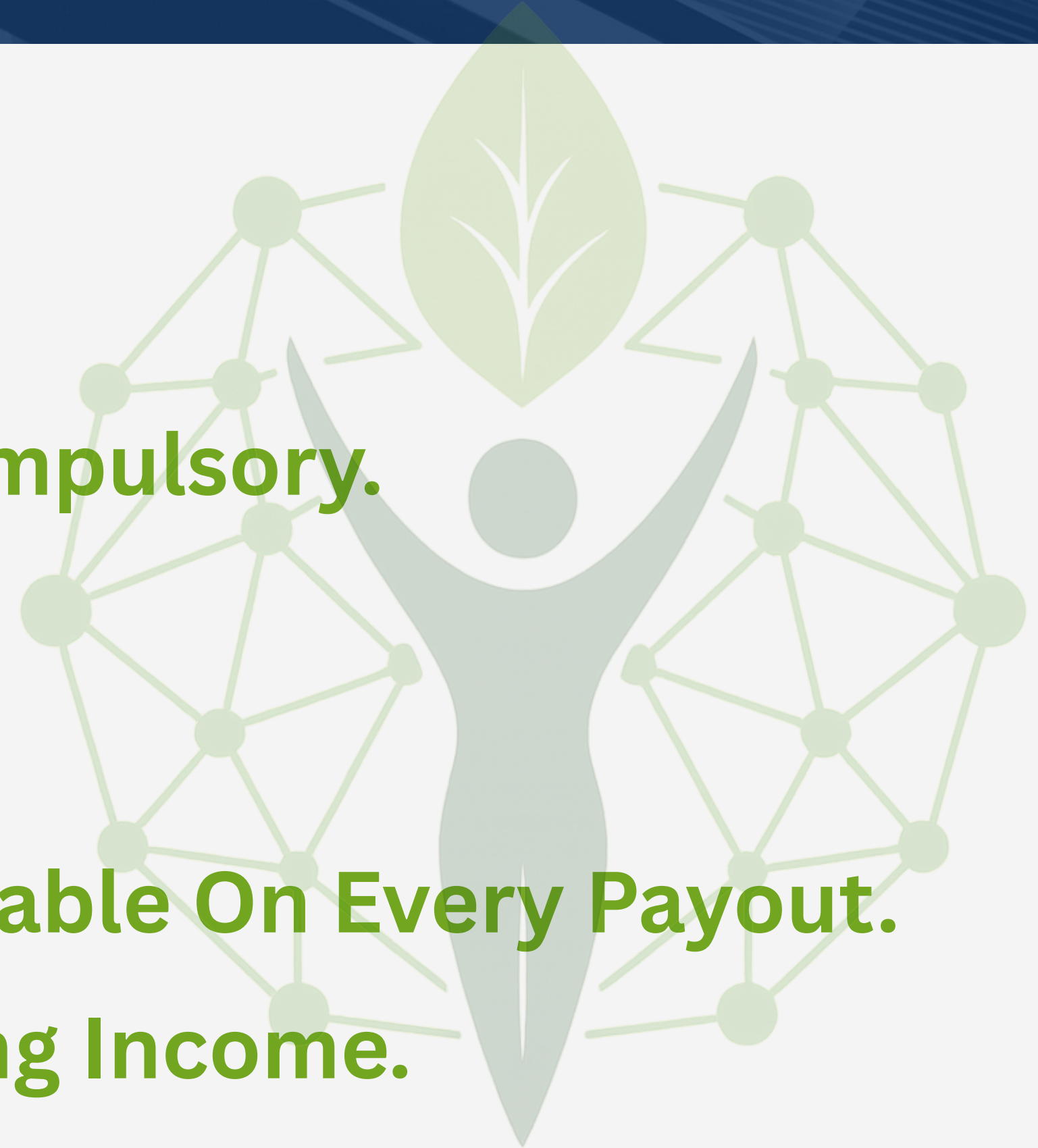
Rank Income Will Be Distributed Till **(10 Months)** From Achievement

Award & Reward

Rank Name	Position	Gift	Rank Name	Pair	Income
Star	Left & Right	Android Mobile	Diamond	Left & Right	Dubai Tour (Family)
Silver	Left & Right	T.V.	Double Diamond	Left & Right	Car Down Payment
Gold	Left & Right	Water Park Tour	Blue Diamond	Left & Right	Flat Down Payment
Platinum	Left & Right	Washing Machine	Crown Dramond	Left & Right	Row House Down Payment
Ruby	Left & Right	GOA Tour With Family 4Day 3 Night	Roya Diamond	Left & Right	Luxary Car Full Payment
Emrald	Left & Right	Kashmir Tour By Plane	Kohinoor	Left & Right	Fortuner Full Paid

Terms & Conditions

- **Daily Closing**
- **Weekly Payouts**
- **One Left & One Right Sponsor Compulsory.**
- **Daily Capping 10,000 Rs.**
- **Minimum Withdrawal 500/- Rs**
- **05% TDS & Admin Charges Applicable On Every Payout.**
- **Capping Is Applicable On Matching Income.**



Connect with us.



Email

contact@richmantra.in



Address

Head Office: Pune
Branch Office: Nanded



Visit Us

www.richmantra.in